



# Piston'n'Prop.

Newsletter

**Marlborough Associated Modellers Society Inc.**  
**Brayshaw Park, 8 Arthur Baker Place, Blenheim 7201**

**President:** Philip Gibbison\*\*  
**Ph:** 5780016

**Secretary:** Nigel Wood\*  
**Ph:** 5787086

**Treasurer:** Tom Hood  
**Ph:** 5784066

**Vice President:** Brent Coburn

**Ph:** 5738511

**Librarian:**

---

**Newsletter Editor:** Carl McMillan\*\*\*

**Ph:** 5780716

**Email:** [carlmcmillan@ihug.co.nz](mailto:carlmcmillan@ihug.co.nz)

**Committee Members:**

Mark Taylor Ph: 5789885

Allan Fairweather Ph: 5786265

Carl McMillan\*\*\* Ph: 5780716

Ron Perkinson Ph: 5789699

\* Primary contact person for Engineering section

\*\* Primary contact person Boating section

\*\*\* Primary contact person Flying section

**MAMS Website:** [www.mams.org.nz](http://www.mams.org.nz)

---

If Clubs or members currently receiving this Newsletter by mail could receive it by email please let me know [carlmcmillan@ihug.co.nz](mailto:carlmcmillan@ihug.co.nz)

---

**February 2017**

---

**Reminder Heritage Day 6<sup>th</sup> February at Brayshaw Park**

**Committee Meeting notes for December / January**

I trust everyone has had a safe and pleasant holiday period and is feeling refreshed and ready for another year of modelling activities. It was rather indifferent weather but a good time to be with family and friends.

Our Model of the Year meeting took place on Tuesday evening, 13th December at 7.30pm in the Clubrooms. It was very encouraging to have a good number of member attend for the social time and to see what had been accomplished during the year. Unfortunately there was not a great number of models on display but the models there were of a very high standard. The accompanying article and photos will give a good indication of what we saw. Thanks to those members who brought models along - it's an encouragement to the rest of us to get busy during the year and have our own models completed.

We welcome Rex Ashwell back to the club in the Aero Section. We also say farewell to Bill Ward who is moving to Feilding. Bill has been with us for the last 16 years and we wish him well in this next stage of his life.

Heritage Day always seems to come too early in the year but it is an opportunity to commemorate our nationhood and also to share our activities in the Park with the wider community. It is also the main opportunity we have each year to raise money for projects and maintenance of our facilities. It would be appreciated if as many members as possible could attend on Waitangi Day and assist so the day goes well.

You should have already received a letter detailing the activities of the weekend but it is included in this newsletter for your information. As you will see, we are also holding the official opening of the completed raised track extension on Sunday afternoon. This marks a significant achievement and the committee wishes to recognise and thank the members who participated over the 18 months or so it took, especially to Win Holdaway who managed the project. We believe the extended track will improve our facilities and add to the attractiveness of the Park.

On behalf of the committee I wish you all a very happy and successful New Year and whatever lies before us.

Nigel Wood  
Secretary

### **Minutes of MAMS Model of the Year Meeting**

Held in Brayshaw Park Club Rooms 13<sup>th</sup> December 2016 at 7.30pm

Present: L. Brehaut, A. Fairweather, P. Gibbison (chair), C. Grocott, J. Henson, T. Hood, A. Holdaway, P. Holdaway, W. Holdaway, A. McGreevy, K. McIntyre, C. McMillan, D. Mathieson, E. Morrison, J. Neal, R. Perkinson, J. Rainey, M. Taylor, N. Wood, Graham ? (Nelson)

Apology: K. Campbell, B. Coburn, G. Vercoe, W. Ward,

Opening: Welcome extended to all in attendance. Encouraging to see a good number of members.

Models were presented and commented on.

Planes: No aircraft on display



Boats: **Dave Mathieson** had completed building a 1:20 scale model of a WW II tank landing craft from 1955 plans scaled to suit model tank bought 20 years ago. Remote control system to be finished but operates ramp, anchor, rudders and speed control. The old radio gear will be replaced by new Futaba set. Very realistic model.



**John Henson** had a yacht model 'Kereru' based on Crispy restricted racing yacht, 36" long made of cedar planking and cloth coating & about 7lb lead in keel bulb. Very nice.



Allan McGreevy had completed a model of a WW II German E boat from a Canadian website plan and was very pleased with the result. Balsa and ply construction with 2 motors powered by lithium battery. He would like it to be lighter to go faster. A good model.



Graham ? From Nelson had a 22" long model of a stern wheel paddle steamer as his first attempt at model boat building. Powered by an old Meccano motor driving paddle wheel through guitar tuning worm gear and made of scrap wood obtained from transfer station. Gearing could be better so model goes faster but very creditable model for first attempt.

**Winner – Dave Mathieson** with his tank landing craft.



Engineering: **Ken McIntyre** had ½ size model of original Robert Stirling hot-air engine based on the 1826 version with a few differences such as a water cooling sleeve, modified bearings and crank pin and increased cylinder wall thickness so model would be robust enough to operate. There was a lot of wood involved in the original construction and the leather cup washer on wooden piston works well. Heated with methylated spirits in a wick-type burner for clean burning. Fascinating to watch the engine in operation.  
**Winner – Ken McIntyre** with his Robert Stirling engine.

**Overall Winner – Ken McIntyre** with his Robert Stirling engine.

Very pleasant evening & meeting closed 21.15pm. followed by supper  
Chairperson

## Steam Section Meeting notes for December 20th.

A short meeting to finish the year before Christmas but a pleasant time with 5 members. This would probably be Bill Ward's last meeting with us as he moves to Feilding to live in January. He will be nearer some of his family who live in Wellington. He and Beryl moved to Blenheim 16 years ago and took part in our 2000 Expo. We wish him all the best for this next stage in his life.

Ken McIntyre demonstrated his 1/4 scale version of the Robert Stirling engine model to ones who hadn't been at the Model of the year meeting. It is very impressive and fascinating to watch in operation. He uses methylated spirits in the burner as it is clean burning.

The evening finished with discussion on the Rogers K88, conventions, and general topics.

## Steam Section meeting January 17th.

Brent Coburn had asked another club member where Nelson gets coal from and subsequently received a quote from Timaru about Welsh coal which works out around \$38 per 20kg bag delivered. Loco grates need altering to allow enough air through and firing techniques are modified. There have been good reports on those who use it. We still have a quantity of Cascade Creek coal which works well in our locos and Mark Taylor thinks there could still be some available from Westport, but mixed with Strongman coal. Not sure what effect this would have in the fireboxes. Mark will check to see if any still available. Ken mentioned that the local firm making high quality char from wood sawdust is still working on the pilot plant so we can't try their product yet.



Win Holdaway had made connecting rods for his 7 1/4g 0-4-0 Pennsylvania loco and brought one to show. There is a lot of work in making interrupted taper pins for the crosshead end, and the tapered gib keys securing bearing halves at the driving end. He mentioned that the ground level station replacement

water tank is to be painted and installed. This is representative of NZR tanks and replaces a tapered American style tank. Two NZR tanks were made and the other is situated alongside the station building at the north end of the raised track extension.

Lawrence Brehaut is in the process of finishing off the axle boxes for his 7 1/4g 2-4-4T Rogers 'Q' locomotive which he had started some 20 years ago. A lot of the parts had been made already but he felt it was time to get going on it once more.

Ken McIntyre had been busy rigging up a hoist for his lathe to enable him to lift and change the heavy 4-jaw chuck.

There was discussion about future projects which would benefit the club. We need to get more people using our facilities but we need to improve the attractiveness of the Park to accomplish this. Any suggestions would be appreciated.

Nigel

### **MAMS on FaceBook**

Marlborough associated modellers society has now a Facebook page (mams)

It's easy to find just type in facebook.com and then search Marlborough associated modellers society.

Anyone can post things on this site.

Pictures and things of interest to others

Things to buy and sell as this is a wider group.

Get friends to like and join this page as the more interest we get the more it goes toward advertising of the club

Take photos of projects and running days as this could spark others to join in the fun.

Remember it free advertising for the club so the more we do the better.

**Brent Coburn**

## **Boat Report.**

Not much sailing lately, far too much wind. Let's hope Heritage weekend is a lot more settled. Two more Starlets are about to join Starlet Fleet Command, they should be ready to by next weekend.

I was out at Basis recently and Tony said he had some Billing Fittings that a customer ordered but never picked up. He is selling them below cost as a job lot, they include Davits, Winches, Cleats, Flagstaff and Rail Stanchions. If you are interested contact him directly, 03 572-8851.



The Vines Village have built a new wharf at their pond and invite us there on Feb 12, between 10am and 4pm to sail on the pond.



Heritage weekend is almost here. We need as many boaties there to help make the day a success. Sunday is our normal running day but it is also the official opening of the new track. Monday is Heritage Day and we need everyone to be there to help get everything ready. There is a BBQ for everyone on the Sunday evening. We need boats for display and on the water. We will be hiring the pond yachts and hopefully some RC yachts to raise some funds to help maintain the pond.

A snippet from one of our members. He was having trouble with the servos playing up in his boat, he had put new batteries in both the Tx and Rx but no change. He then tried a different brand of battery and the problem disappeared. Conclusion is that it's not wise to buy cheap batteries, pay a bit extra and get a better battery! We have a Billings' Smit Rotterdam tug for sale, the builder unfortunately passed away suddenly before he got it finished and it has been sitting in a box for the last 3 years. It is mostly built but needs finishing. Everything needed is still in the original box. It has radio, speed controllers and running gear installed and comes with a 5 channel Spectrum 2.4Ghz radio, all of which has never been used. His wife has got to the point where she is now happy to part with it but does not want to 'give it away', if you are genuinely interested please contact me through the club contact.

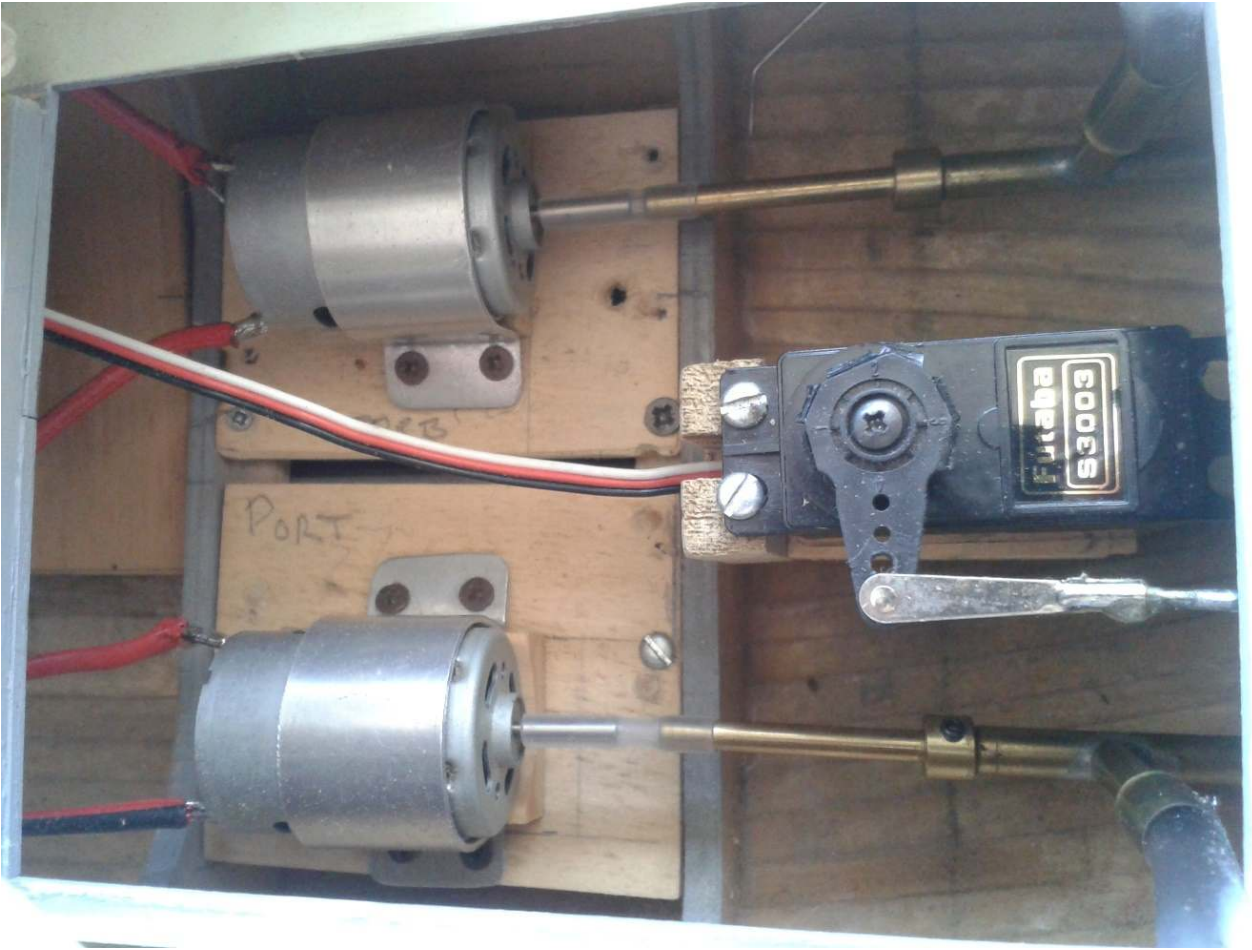
Our next Section meeting is Thursday 2<sup>nd</sup> Feb, 7.30 at the clubrooms.

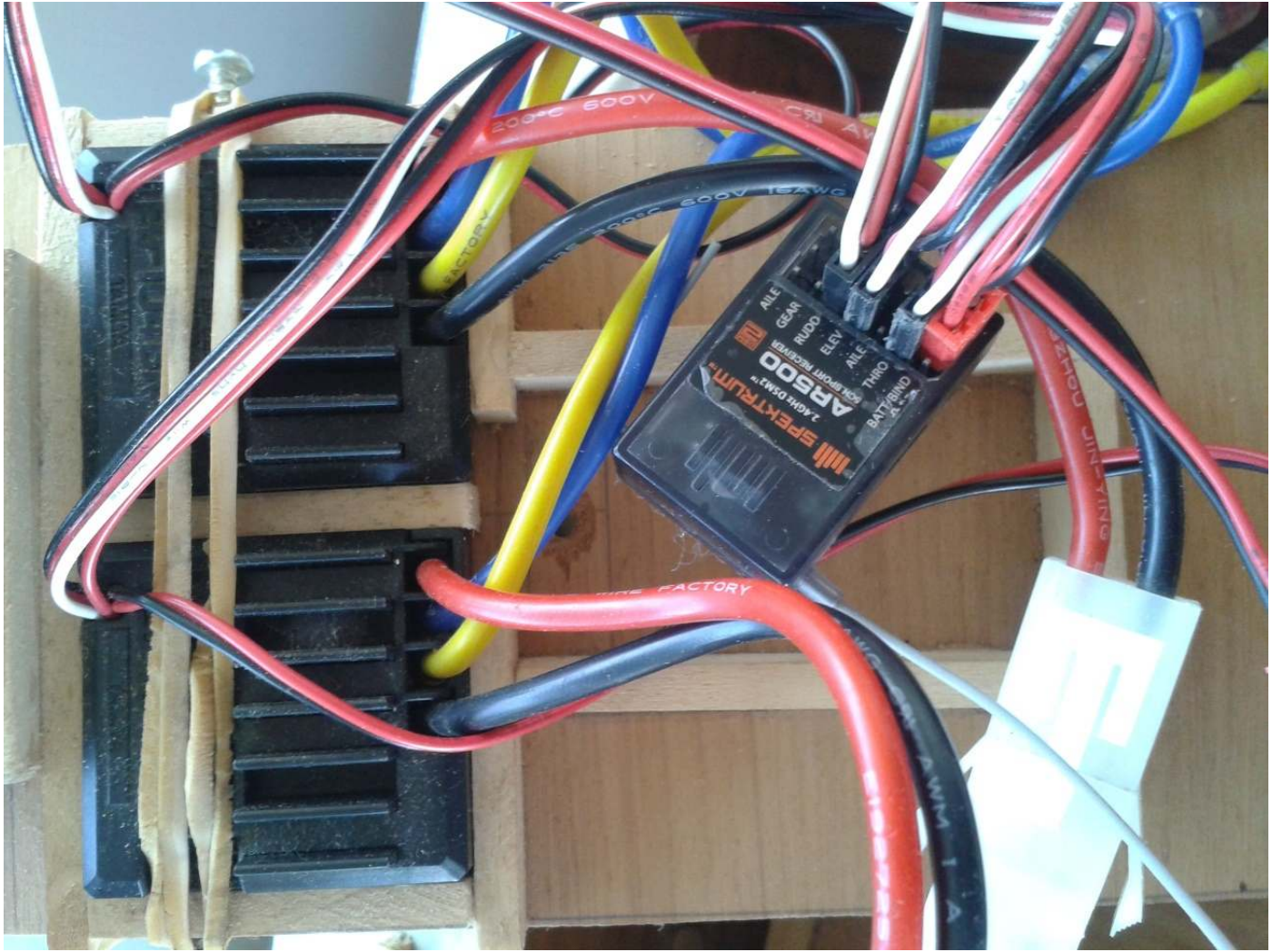
See you there

Philip











## **Flying Report**

Not much has been happening out at the airfield lately that I know of, the weather has been pretty changeable and generally windy. I have been out and had a few good flying sessions but few others of any have been out. Hopefully the weather will settle and be a bit kinder to us soon.

This Saturday (28<sup>th</sup> Jan) weather was beautiful and I had a great time Towing at the local aerotow meeting. While not as many people were there as at previous meetings there were people from around the country and some very nice models. Flights of an hour plus were possible and it was a very pleasant relaxed meeting with more socializing than flying for some. With four tow planes working it also relieved the pressure and gave us some time to sit and watch the action. Was also good to catch up with Allan Knox, a recent MAMS flyer.



Models being assembled.



Models lining up for take-off.



Off for another Flight

More Gliders waiting their turn. There were a variety of model from Vintage wood and fabric models to modern Fibreglass, and sizes from 2 metres to over 5 metres. Well done to all those involved.

This summers slope soaring has not come to much with only a few flyers showing up from the two clubs. The last meeting the wind was strong and changed back

and forth almost 180 degrees three or four times in the half hour Philip and I were there. The week before it was very windy and not square onto the slope, while I did manage to fly the JW60 it was a battle. Philip had several attempts at launching his Jazz 60 but just got blown back along the slope, hopefully we will get some decent flying days in before the end of the season.

There have been some changes to MFNZ subs. MFNZ subs are now \$75 dollars for seniors members, \$80 for Family, but still \$20 for Junior members. For MFNZ members subs now need to be paid to the club by 30 March 2017 to keep continuous insurance cover, this is a change from previous years. Remember when paying these subs into MAMS bank account put MFNZ as the reference. (SBS Bank Account number is 031355 0512739 00). If any new members wish to join MFNZ please let me know and I will get you the application forms. MAMS Subs will be decided at the AGM in April.

Here is a letter from MFNZ with a full explanation:

### ***MFNZ Insurance changes***

*Some of you may have noticed that the Expiry Date on the current MFNZ membership cards has changed from previous years. The expiry date of membership was set at end of June and now it's moved to the end of March. This is a small but very significant change that has been invoked through conversation with the current MFNZ insurer and IRD.*

*In previous years the MFNZ fees became due on 31<sup>st</sup> March but payment was not required for three months (30th June). Having checked with our insurance broker, we have been informed that only current financial members are covered by the policy. The clubs are considered by the insurer to be agents of MFNZ, therefore when a member pays their annual fee to their club, the member becomes financial and the insurance is activated.*

*This stricter adherence to dates is a result of the tougher attitude of insurers post Christchurch earthquake. In the past we have taken a very benign attitude to members' renewals and fortunately this has not been tested, but it runs the risk that a claim might be refused. It is not a practice that we are prepared to continue as we now have to certify the membership status when submitting a claim.*

*In concert with the brokers we have been told by IRD that our membership year must align with our financial year*

*What this all adds up to is that clubs will now need to be invoicing their membership early next year (2017) with an expectation that payment will be made by each member by 31<sup>st</sup> March at the latest. Members that pay after 31<sup>st</sup> March*

*will not have MFNZ insurance coverage until their fees are paid. The membership secretary will be sending out all of the required information in January.*

*Clubs should be invoicing their members in a way that makes clear that the fee has two elements. One part for the club and one which is passed on to MFNZ. Previously, some clubs have not set their fee until part way through the financial year as their AGM is after 1 April. Most that we've looked at can charge the same fee next year and will need to look ahead at their next AGM to see what fee the club will need to charge the following year. The alternative is to hold an SGM to agree a fee increase for the club element.*

*These changes have been communicated in the November 2016 Model Flying World (Page 51, Notice Board). Some clubs have already put systems in place to ensure that their membership is invoiced in a timely fashion ( January 2017) but I've sent this email to make sure all clubs are aware of the change and have sufficient time to comply with this requirement.*

*MFNZ has put a system in place to record the earlier payment date of fees. A new system of membership affiliation, created to rationalise the affiliation of members, will be released in the next few weeks. Hopefully this will lower the workload on all people involved in the collection and recording of membership fees.*

### **2017/18 MFNZ fees**

*The MFW article incorrectly noted the MFNZ fees for next year. The correct fees for next year are:*

- *Senior \$75*
- *Family \$80*
- *Junior \$25*

### **New members**

*New members joining after 1<sup>st</sup> January can be charged a full year fee and they will be recorded as financial members of the 2017/18 year. The MFNZ insurance does provide three months coverage for prospective members before requiring payment of fees.*

*Jonathan Shorer*



*President MFNZ*

Don't forget Heritage day at Brayshaw Park on 6<sup>th</sup> February. See letter below. If anyone wishes to put models on display can they get them in the club room early on Monday morning please by 9am preferably. We have been asked to help out collecting money at the gate again for an hour during the day, if anyone could help out with that please let me know.

Hopefully the weather improves and we can all get out and enjoy our flying, and chin wagging, together.

Have fun, be safe.

Cheers all.

Carl.

## MARLBOROUGH ASSOCIATED MODELLERS SOCIETY (INC.)



ADDRESS ALL  
CORRESPONDENCE  
TO THE SECRETARY  
16 January 2017

8 ARTHUR BAKER PLACE,  
BLENHEIM 7201

Dear Members,

This is to advise you of a number of arrangements concerning this year's Heritage Day celebration over the weekend of Sunday 5<sup>th</sup> and Monday 6<sup>th</sup> February at Brayshaw Heritage Park. On Sunday we will be having the official opening of our completed raised track extension commencing at 1pm and on Monday, Park activities for the public will commence at 10 am and finish at 4pm.

Sunday is our normal club running day and boats and trains will operate as usual following the short opening ceremony at 1pm. We have invited our Patron, the Mayor, to officially open the track.

Because guests from other clubs may be heading away home on Monday afternoon we have decided to hold our usual pot-luck meal on the Sunday evening. After the 4pm finish and clean up, we plan to have the

evening pot-luck meal commencing around 5.30/6 pm for members, families and guests. This has been an enjoyable time of fellowship in past years after the day's activities. The Club will provide BBQ sausages and soft drinks, and members are requested to bring a salad and dessert to share, plus BYO if desired. Hopefully the day will have been fine and this is a great way to end.

On Monday (Waitangi Day) there will be boats/yachts operating on the pond along with a static display of models in the vicinity. The day's sailing program will be arranged by Section Captain to enable all types of models to operate and provide an interesting display for the public. Members are requested to park in the main car park to reduce congestion around the pond and provide better viewing access for the public. Pond yachts will be available for children to sail. There will be a need to set up marquees and displays in preparation. This will require starting around 8am and as many hands on deck as possible to assist, please.

Trains will be giving passenger rides on the raised track and on the ground level track systems. At present because of the total fire ban we have been granted an exemption by the Fire Department to operate steam locomotives but only for those locos having enclosed fire boxes (eg. Sweet Peas), spark arrestors, and those with enclosed ash pans so no embers can fall on the track and ignite pine needles. There are three diesel locos available in the club for giving train rides so we will be really stretched if there are lots of public wanting rides. Added to this is an acute shortage of Engineering Section members able to help with driving and in station duties. Members from Christchurch and Nelson clubs (and others who may wish to try our new raised track extension) are cordially invited to join with us for the weekend and hopefully bring diesel locos plus helping with running operations.

There will be a static display of models in the clubrooms and members are requested to bring models to the clubrooms Saturday morning for set-up. Models could also be left in the clubrooms on Friday evening if more convenient and there will be a member staying in a

campervan beside the roundhouse overnight which will provide a measure of security. Ken McIntyre and Peter Holdaway will be supervising the display during the day.

There will not be a barbecue selling sausages and soft drinks this year.

Morning and afternoon teas will be provided in the upstairs signal box during the day from 9.30am. Contributions of food towards morning & afternoon teas would be appreciated. Lunches consisting of filled rolls and fruit will be available for members and any guests from other clubs if required. Numbers requiring lunches will be collected during the morning. Contact Grace Wood if able to help with catering.

We are requested to provide 4 people for an hour during the day to help with car parking and gate collection duties. Time and still to be advised but this is not a difficult task and volunteers would be appreciated. See Carl if you are able to help for an hour.

I trust the day will be fine and everyone will enjoy themselves. This is our main fund raiser for the year so we hope the day will go successfully.

Cheers,  
Nigel

**For Sale:**

7 1/4" g. Loco and Tender "Southern Belle" with 3 NZR Ride on Passenger Carriages, ALL Running gear and storage/work trolleys. Excellently performing Loco for sale because of health. Full details from Ken McIntyre 035783346. 15 Solway Drive, Blenheim.

NOTE - NZ Model Flier's World is now available for issue at both Blenheim and Picton libraries.

**MAMS Membership and Subscription Structure**

Ordinary Member (all Sections)	\$55.00
Family membership	\$60.00
Junior Member	\$35.00

Country Member (+40km from Blenheim) \$35.00

Life Member Nil.

Members may belong to any or all of the following Sections, for one Ordinary Membership fee:

Engineering - Boating - Flying.

*Flying Section members may join **MFNZ** (Recommended) for an **additional** annual fee of: **Senior \$75, Junior \$20, and Family \$80**, paid to MAMS.*

*NOTE: MFNZ Fees must be paid to the club before **31 March**. New members joining after 1<sup>st</sup> January can be charged a full year fee and they will be recorded as financial members of the 2017/18 year.*

For on-line payments members just have to use the club account number, give their name and purpose of payment, i.e. **MAMS subs**, and/or **MFNZ subs**.

SBS Bank Account number is 031355 0512739 00

**Subscription Policy:** Financial membership shall cease if the required subscription fee has not been paid by the **31<sup>st</sup> of July**. **Non-financial members are not covered by our insurance policy and therefore cannot operate their models at our designated sites**, and they do not receive a Newsletter.

(**New** members who have joined and paid their Subs from December 2016 onwards are still considered paid up club members for 2017/2018 year)

Those who have paid their subscription since the last AGM may collect their membership card and receipt from a folder on the notice board in the clubroom. Anyone not wishing to renew their membership please let the treasurer, or a committee member, know. If any flying section members are not renewing their membership could they also return their key to the flying field.

Publication dates: 1<sup>st</sup> week of February, **April**, June, August, October, and December.

Please get any items (Notices, articles, or for sale items etc) for the **April**, issue to the editor a few days before the end of **March**.